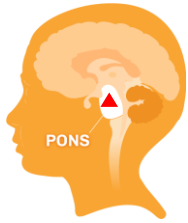


Establishment of nanobody's selection tools to identify biomarkers in DIPG

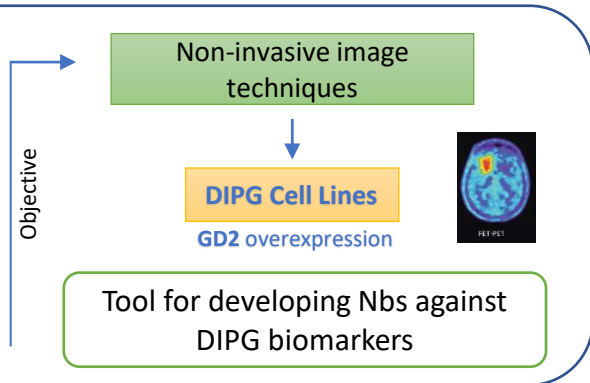
Noelia Mendoza Calvo, nmendoza@iisaragon.es; Aragon Health Research Institute (IIS Aragón), Zaragoza, Spain

Introduction

Diffuse intrinsic pontine glioma: **DIPG**



- ◆ Agresive tumor
- ◆ Diffuse growth
- ◆ Survival <1 year
- ◆ Imprecise diagnosis



Libraries

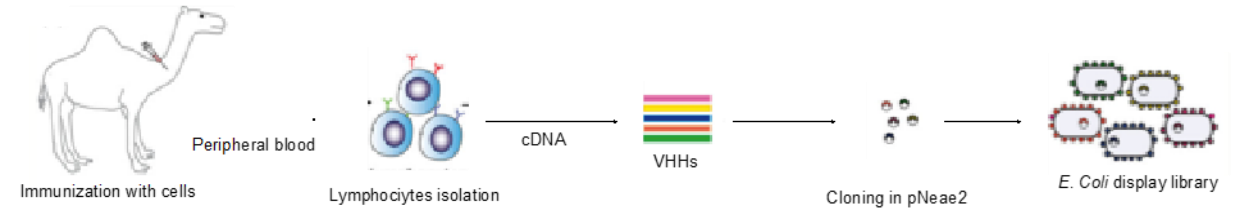
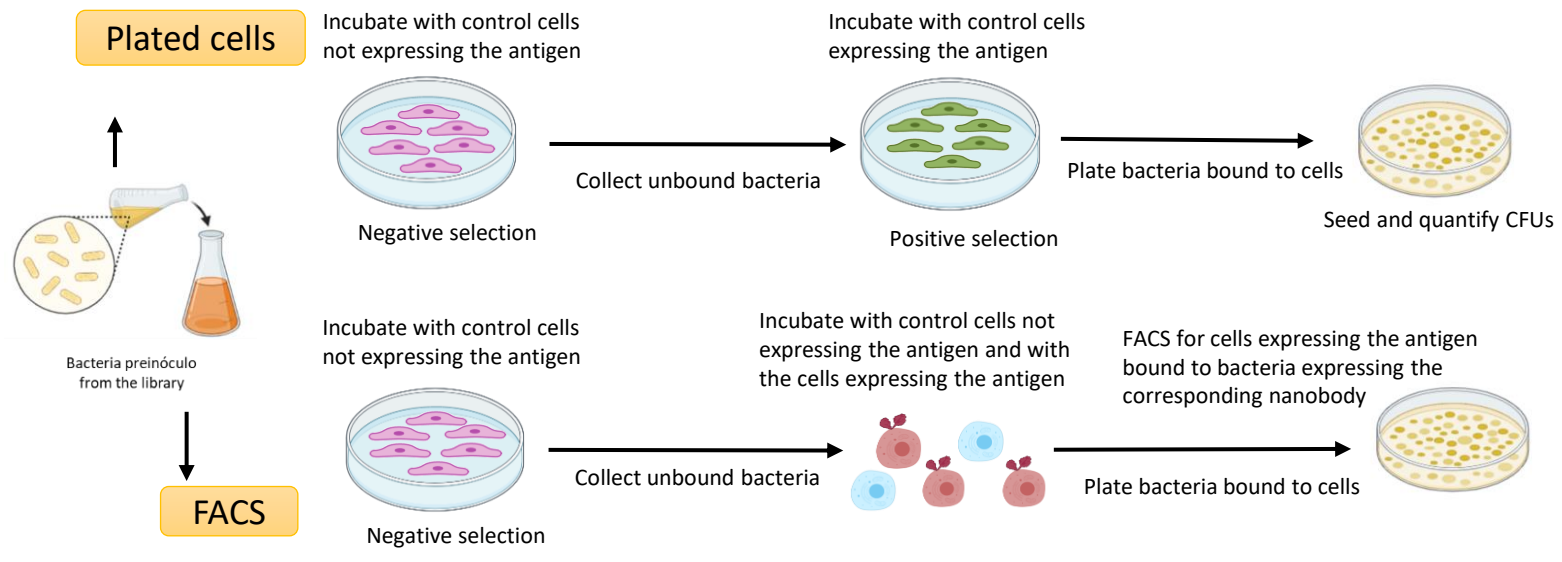


Figure 1. Libraries are generated by camelid immunization. The cDNAs corresponding to VHHs regions from lymphocytes are amplified and cloned in pNeae2 vector for *E. coli* display in the outer membrane.

Nanobodies selection



MACs

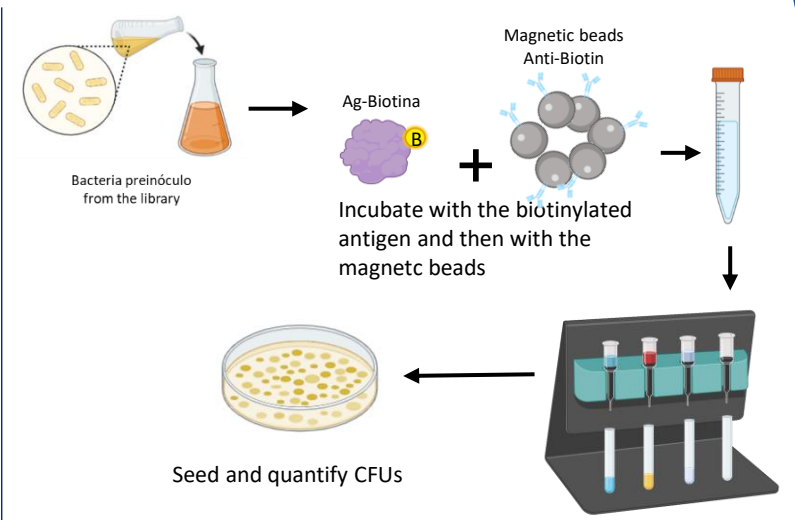


Figure 2. The selection of the nanobodies that recognizes the protein of interest can be selected by FACS for cells expressing the antigen or either by plating selection with cells expressing the antigen or by magnetic cell sorting (MACs)